

REGIONAL CONTEXT

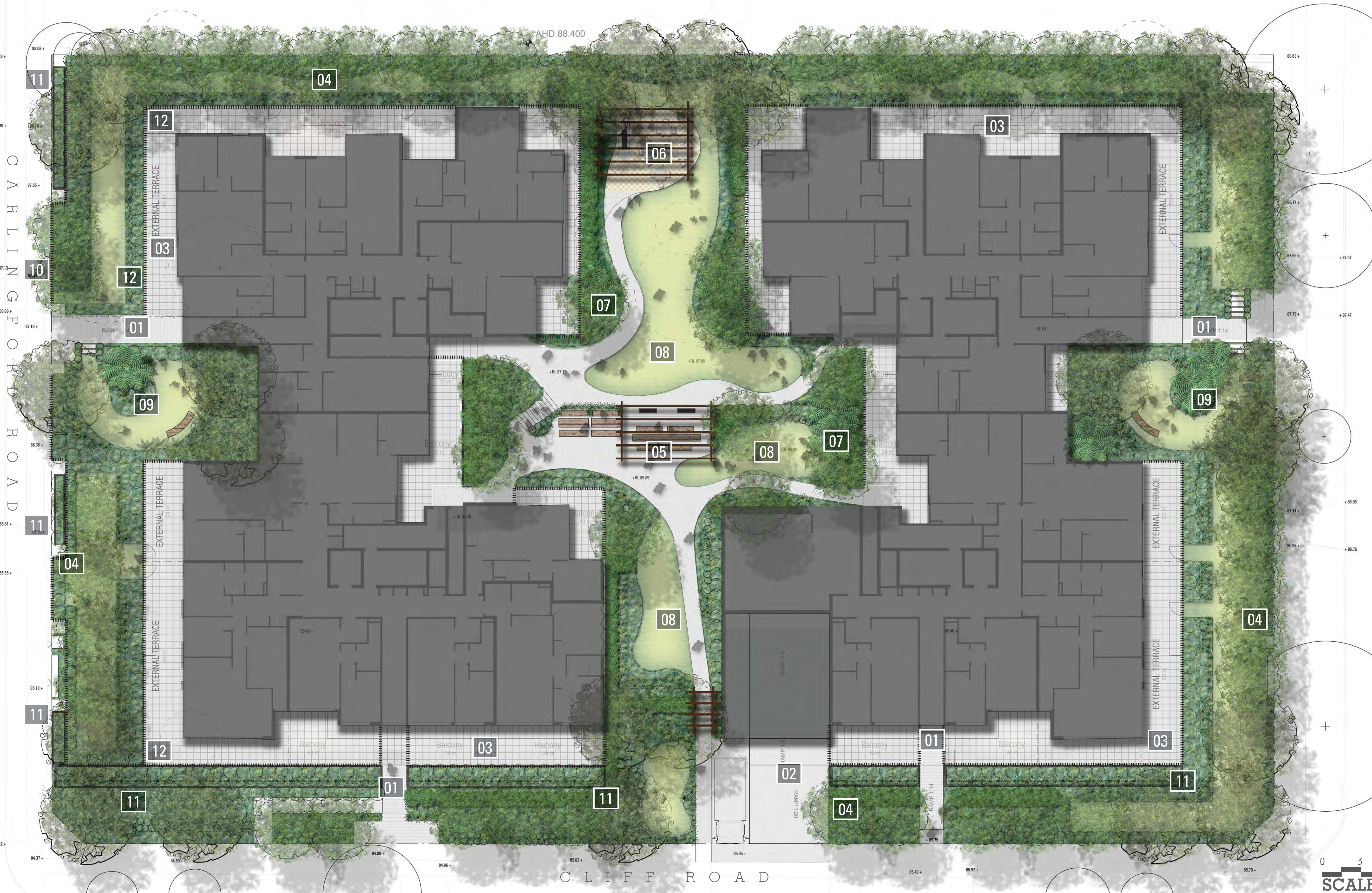
The site is locating 16 kilometres away from Sydney CBD with strong connection to major roads and Motorways such as Beecroft Road and M2.



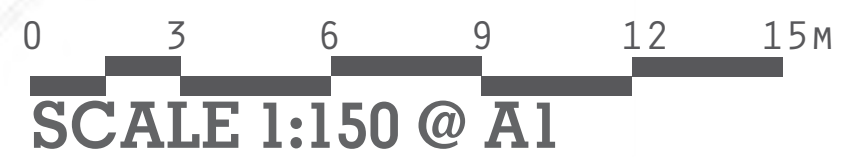
LOCAL CONTEXT

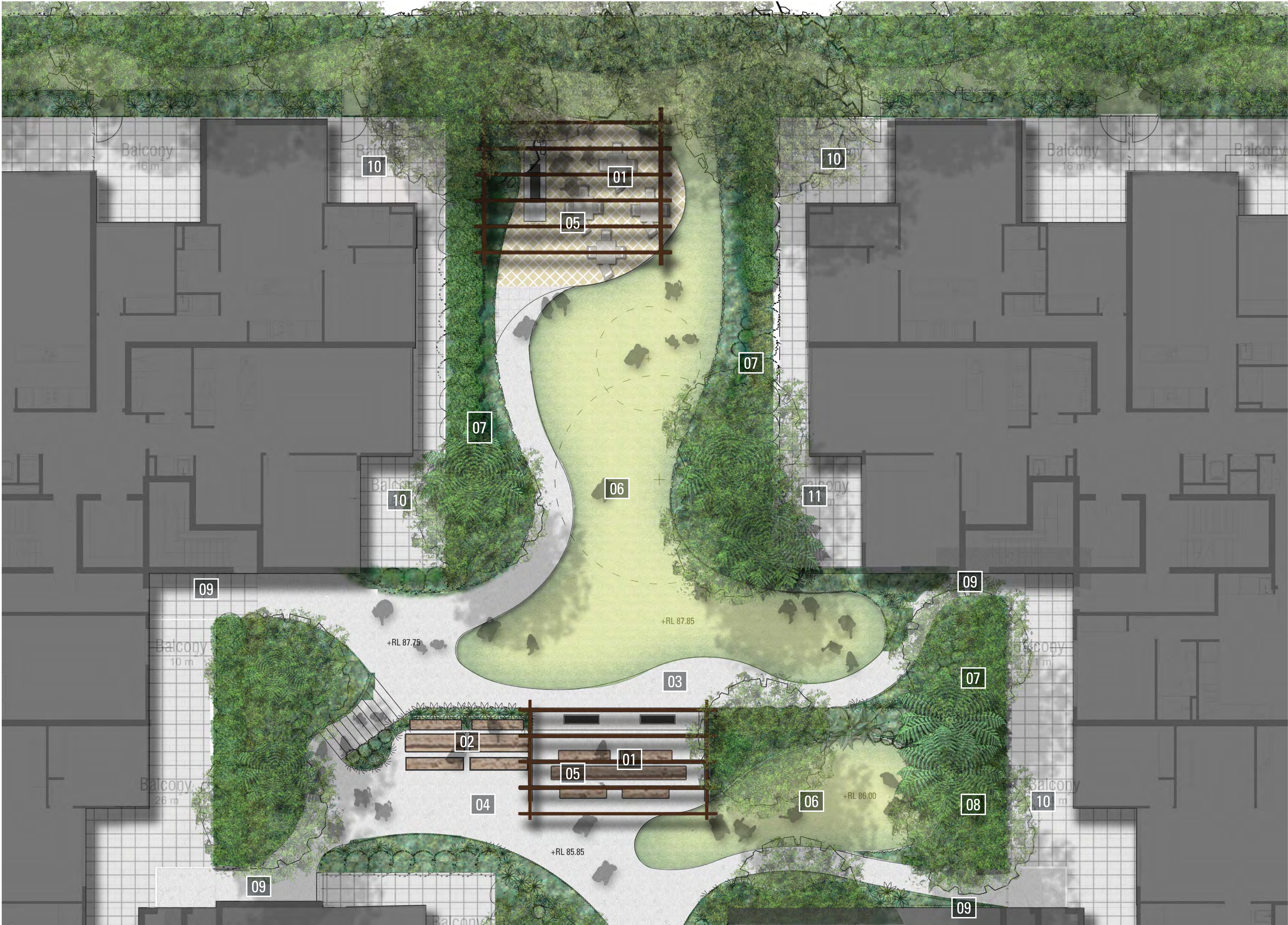
Less than 0.5 kilometre away from Epping train station site has strong link to public transport.





- LEGEND
- 1. BUILDING ENTRY
 - 2. DRIVEWAY ENTRY
 - 3. PRIVATE COURTYARDS
 - 4. BUFFER LANDSCAPE IN DEEP SOIL
 - 5. BBQ AREA
 - 6. PAVED AREA WITH SEATING + SHADE AND BARBEQUE
 - 7. MOUNDED GARDEN BED ON PODIUM
 - 8. TURF OPEN SPACE
 - 9. COMMUNAL OPEN SPACE WITH DEEP SOIL PLANTING
 - 10. 1.7M HIGH FENCE ON BOUNDARY
 - 11. RAISED PLANTER BEDS
 - 12. 1M HIGH FENCE AROUND TERRACES



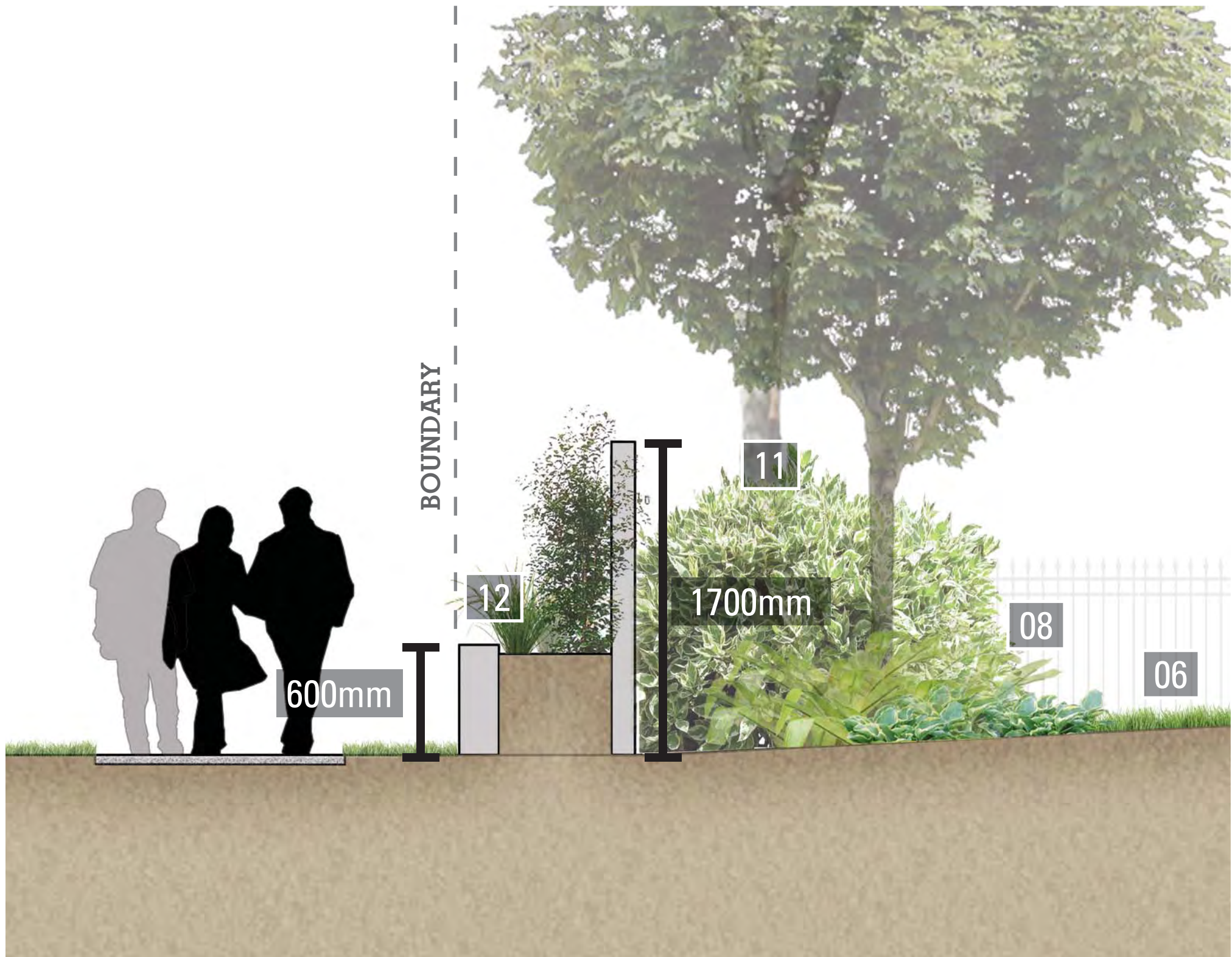


LEGEND

- 01. TIMBER PERGOLA STRUCTURE
- 02. SEATING BENCH WITH TABLES
- 03. UPPER TERRACE
- 04. LOWER TERRACE
- 05. PAVED AREA WITH TABLES AND BARBECUE
- 06. TURF AREA
- 07. MOUNDED GARDEN BED WITH BUFFER PLANTING
- 08. DEEP SOIL PLANTING
- 09. LOBBY ACCESS
- 10. PRIVATE COURTYARDS WITH RETAINING EDGE



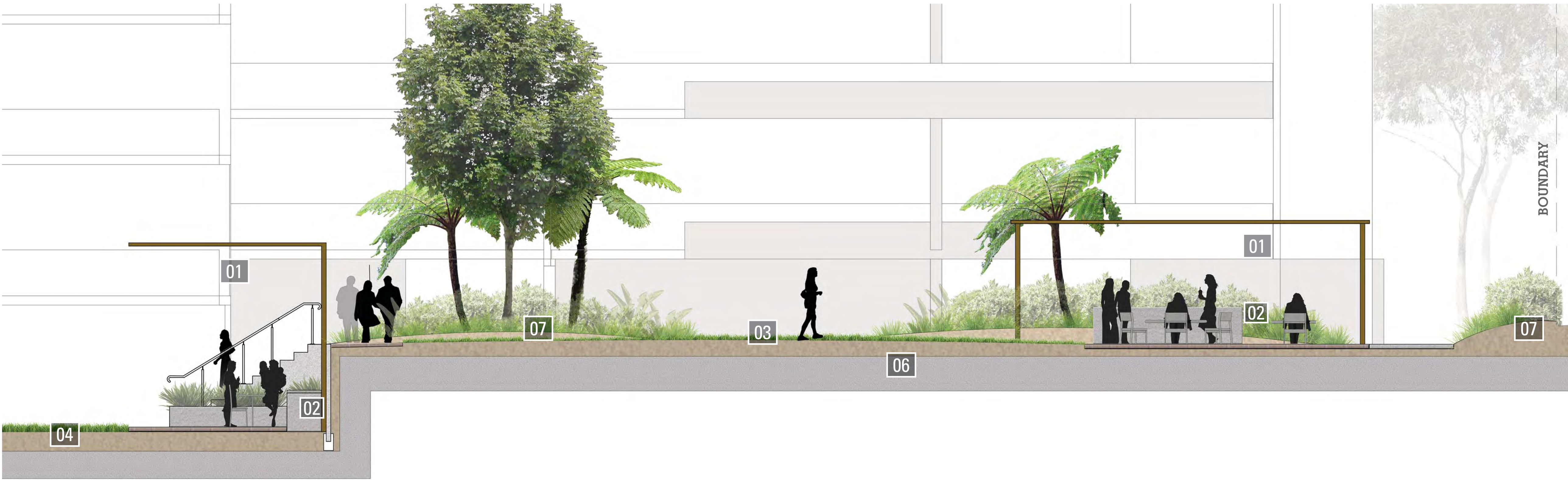
Section AA - 1:50 @ A1



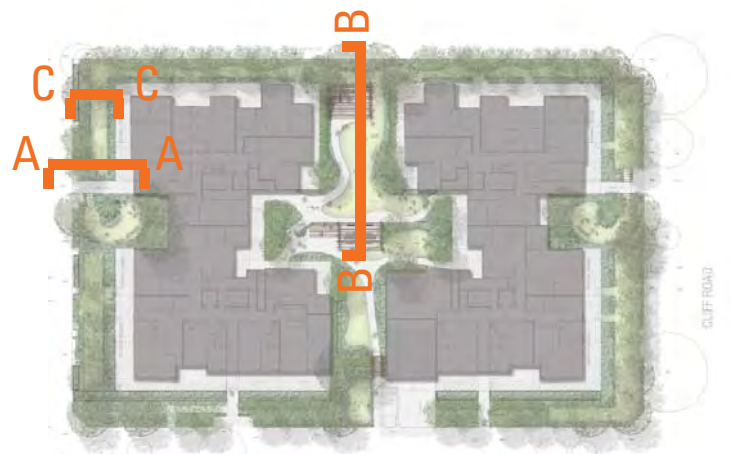
Section CC - 1:25 @ A1

LEGEND

- 01. TIMBER PERGOLA STRUCTURE
- 02. BARBECUE AREA
- 03. UPPER TERRACE
- 04. LOWER TERRACE
- 05. PAVED AREA WITH TABLES
- 06. TURF AREA
- 07. MOUNDED GARDEN BED WITH BUFFER PLANTING
- 08. DEEP SOIL PLANTING
- 09. COURTYARD
- 10. 1.7M HIGH FENCE ON BOUNDARY
- 11. SCREEN PLANTING TO BOUNDARY FENCE
- 12. RAISED PLANTER BED



Section BB - 1:50 @ A1



KEY PLAN

0 1 2 3 4 5 M
SCALE 1:50 @ A1

TREES



Cupaniopsis anacardioides



Tristaniopsis laurina 'Luscious'



Eucalyptus haemastoma



Corymbia maculata



Ulmus parvifolia

SHRUBS



Santolina chamaecyparissus



Leucophyta brownii



Westringia fruticosa



Murraya paniculata



Westringia Jervis Gum



syzygium paniculatum

FERNS AND CYCADS



Aspidistra elatior



zamia furfuracea



Yucca filamentosa



Agave attenuata



Cordyline rubra

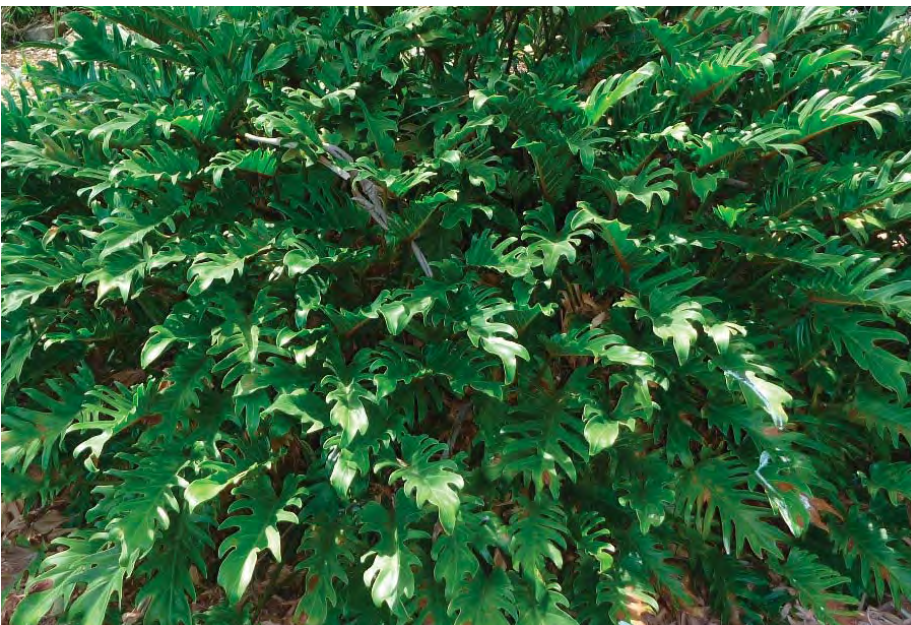


Clivia miniata

ACCENTS



Todea barbara



Philodendron xanadu



Asplenium australasicum



Cycas revoluta



Calathea rufibarba

GRASSES



Pennisetum 'Nafray'



Liriope-evergreen-giant



Lomandra longifolia 'Tanika'



Dianella caerulea

GROUNDCOVERS



Dichondra repens



Dichondra argentea 'Silver Falls'



Stachys byzantina



Adiantum-formosum



Ficus pumila



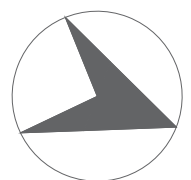
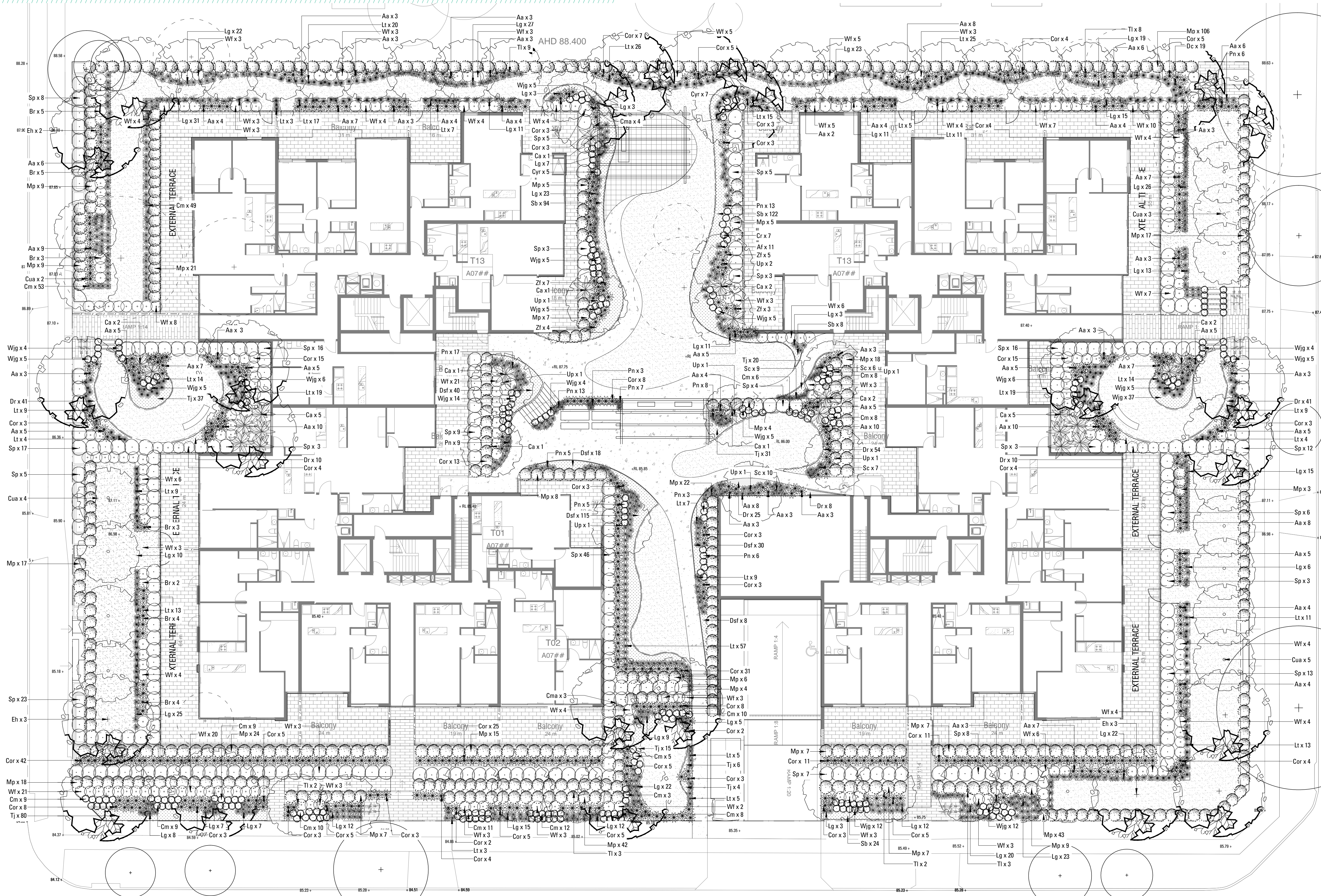
Trachelospermum jasminoides

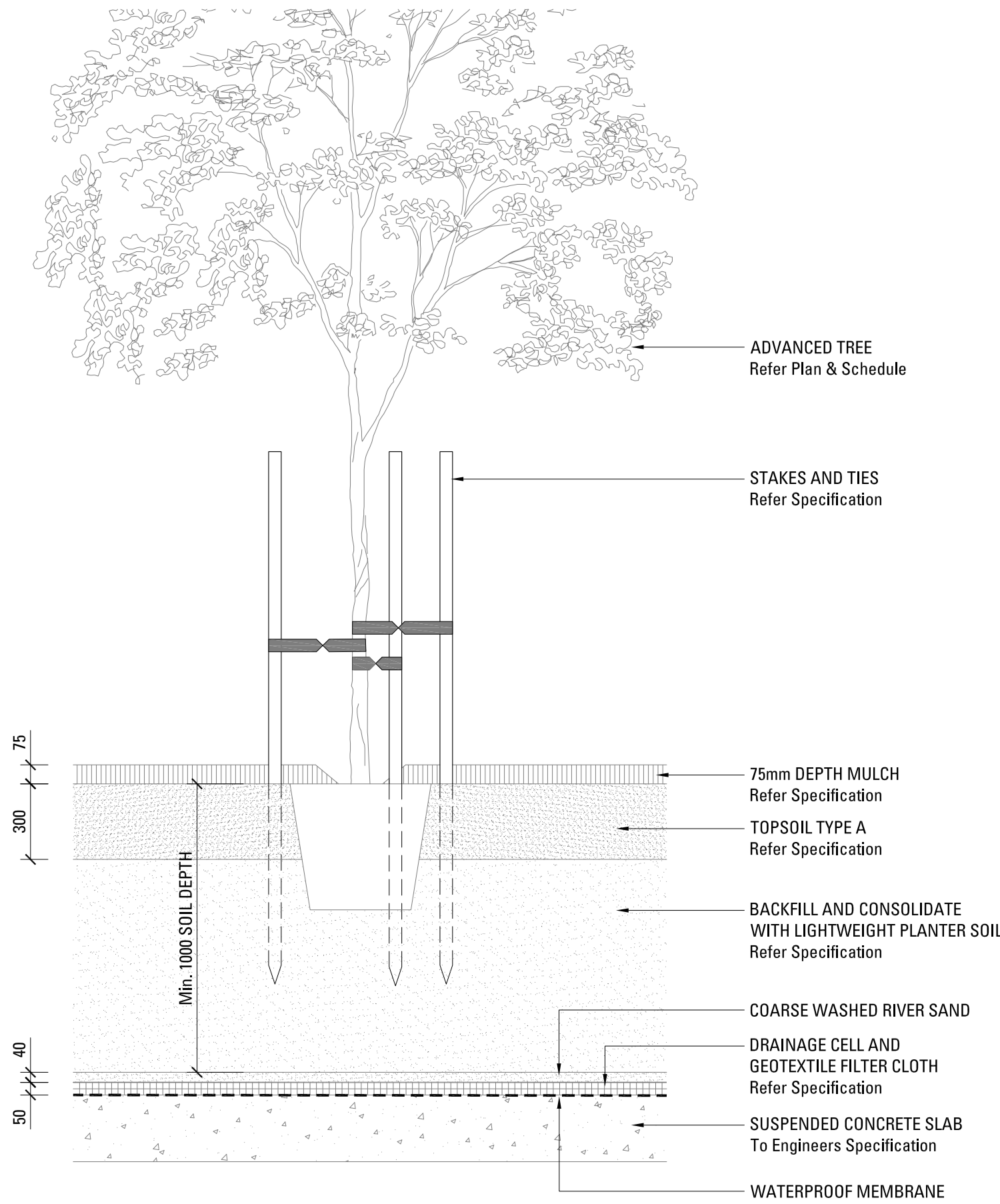
14-251 Cliff Road, Epping PLANT SCHEDULE

CODE	BOTANIC NAME	COMMON NAME	MATURE SIZE (h x w) (m)	PROPOSED POT SIZE	QUANTITY
TREES & PALMS					
Cua	Cupaniopsis anacardioides	Tuckeroo	12 x 8	100L	14
Cma	Corymbia maculata	Spotted Gum	20 x 10	200L	7
Eh	Eucalyptus haemastoma	Scribbly Gum	15 x 10	200L	8
Tl	Tristaniopsis 'Luscious'	Luscious Water Gum	10 x 5	100L	27
Up	Ulmus parvifolia	Chinese Elm	10 x 5	100L	9
SHRUBS & ACCENTS					
Aa	Agave attenuata	Century Plant	1 x 1	10L	243
Ca	Cyathea australis	Rough Tree Fern	5 x 2	1.5 - 2m Trunks	23
Cm	Clivia miniata	Bush Lily	1 x 1	10L	420
Cor	Cordyline rubra	Palm Lily	3 x1	200mm	304
Mp	Murraya paniculata	Orange Jasmin	3 x 2	200mm	744
Sc	Santolina chamaecyparissus	Cotton Lavender	0.5 x 1	20L	32
Sp	Syzygium paniculatum	Magenta Lilly Pill	5 x 2	45L	215
Wf	Westringia fruticosa	Coastal Rosemary	1.5 x 1.5	200mm	221
Wjg	Westringia 'Jervis Gem'	Coastal Rosemary	1 x 1	20L	133
GRASSES & RUSHES					
Dc	Dianella caerulea	Flax Lily	0.5 x 0.5	150mm	19
Lg	Liriope muscari 'Evergreen Giant'	Lilyturf	0.5 x 0.5	150mm	481
Lt	Lomandra 'Tanika'	Mat Rush	0.6 x 0.6	150mm	353
Pn	Pennisetum 'Nafray'	Swamp Foxtail	1 x 1	150mm	95
FERNS & CYCADS					
Br	Bromeliad neoregelia	Blushing Bromeliad	1 x 1	20L	26
Cr	Calathea rufibarba	Furry Feather Calathea	0.6 x 0.5	10L	7
Cyr	Cycas revoluta	King Sago Palm	1.5 x 1	45L	12
Zf	Zamia furfuracea	Cardboard Plant	1.5 x 1.5	20L	19
GROUNDCOVERS & CLIMBERS					
Af	Adiantum formosum	Giant Maidenhair	0.5 x 0.5	150mm	11
Dsf	Dichondra argentea 'Silver Falls'	Kidney Weed	0.2 x spreading	150mm	211
Dr	Dichondra repens	Kidney Weed	0.2 x spreading	150mm	189
Sb	Stachys byzantina	Lambs Ear's	0.25 x spreading	150mm	248
Tj	Trachelospermum jasminoides	Star Jasmine	0.25 x 1	150mm	193

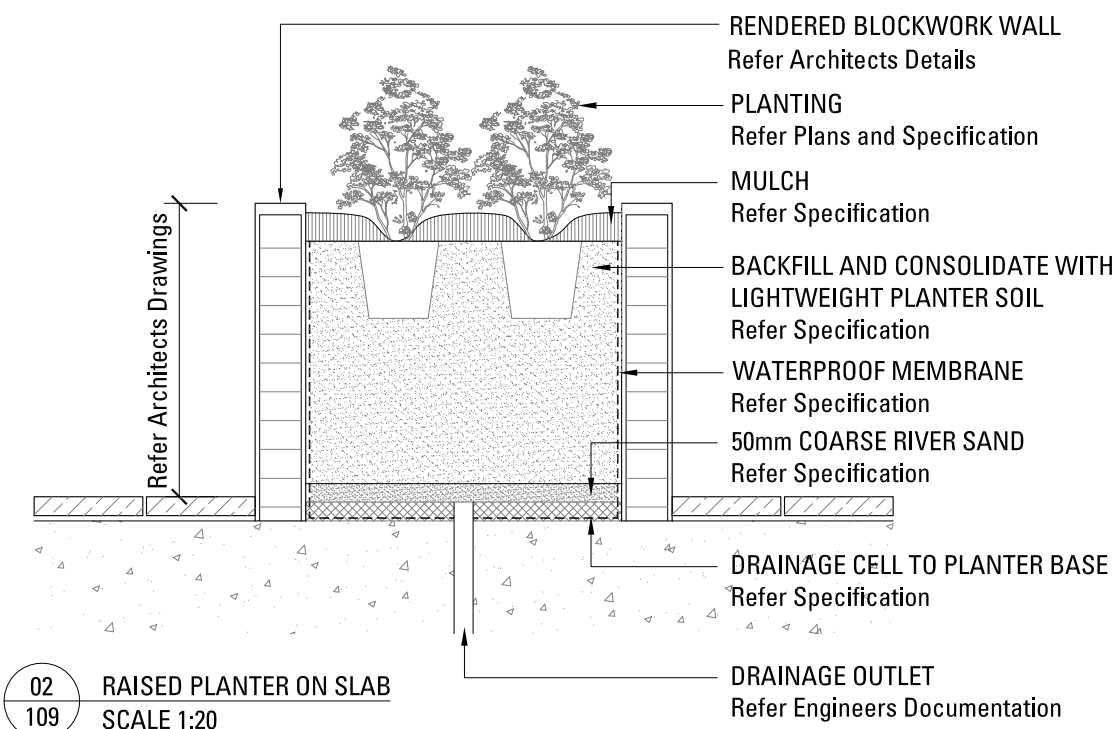
CARLINGFORD ROAD

CLIFF ROAD

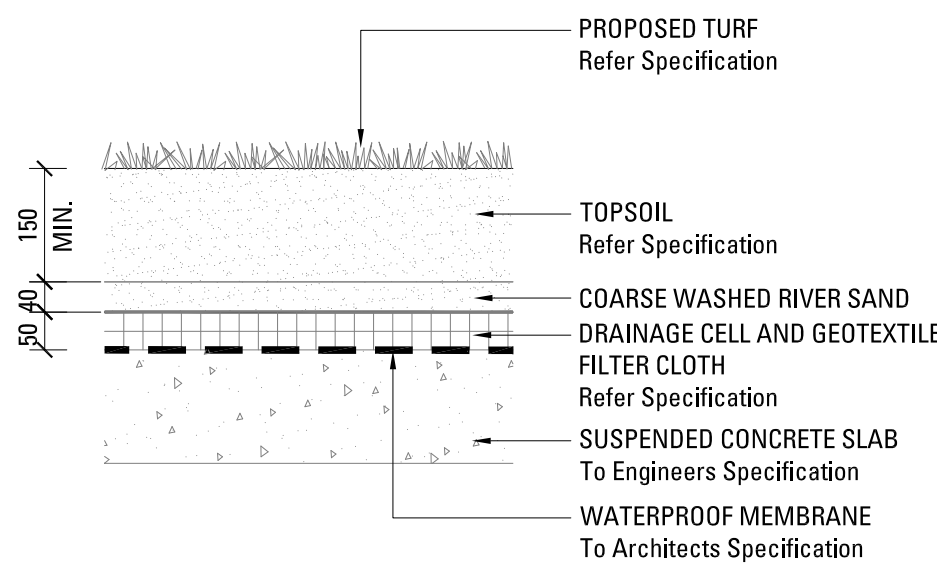




01 TREE PLANTING ON SLAB 75-100L
SCALE 1:20



02 RAISED PLANTER ON SLAB
SCALE 1:20



03 TURF ON SLAB
SCALE 1:10

LANDSCAPE SPECIFICATION NOTES

SERVICES

BEFORE LANDSCAPE WORK IS COMMENCED THE LANDSCAPE CONTRACTOR IS TO ESTABLISH THE POSITION OF ALL SERVICE LINES AND ENSURE TREE PLANTING IS CARRIED OUT AT LEAST 3 METRES AWAY FROM THESE SERVICES. SERVICE LIDS, VENTS AND HYDRANTS SHALL BE LEFT EXPOSED AND NOT COVERED BY ANY LANDSCAPE FINISHES (TURFING, PAVING, GARDEN BEDS ETC.) FINISH ADJOINING SURFACES FLUSH WITH PIT LIDS.

ARBORIST MANAGEMENT OF TREE PROTECTION

A QUALIFIED AND APPROVED ARBORIST IS TO BE CONTRACTED TO UNDERTAKE OR MANAGE THE INSTALLATION OF PROTECTIVE FENCING, AND TO UNDERTAKE SUCH MEASURES AS HE DEEMS APPROPRIATE TO PRESERVE THE SUBJECT TREES TO BE RETAINED. THE ARBORIST IS TO BE RETAINED FOR THE ENTIRE CONTRACT PERIOD TO UNDERTAKE ONGOING MANAGEMENT AND REVIEW OF THE TREES.

DRAINAGE CELL AND FILTER FABRIC

FOR ON-SLAB AREAS INSTALL AN APPROVED 'DRAINAGE CELL' PRODUCT TO COMPREHENSIVELY COVER THE BOTTOM OF ALL PLANTERS. OVER DRAINAGE CELL TO ON-SLAB AREAS, A POLYFILT GEOTEXTILE LINING (AS SUPPLIED BY 'POLYFILT TS' OR APPROVED EQUIVALENT) IS TO BE INSTALLED TO COVER THE BOTTOM OF ALL PLANTERS, TURNED UP 300MM AND TAPED TO THE PLANTER SIDES TO ENSURE SOIL MIX DOES NOT ESCAPE INTO DRAINAGE OUTLETS/HOLES. INSTALL MIN. 50MM COARSE RIVER SAND OVER ALL GEOTEXTILE LINING PRIOR TO INSTALLATION OF SOIL MIX.

PLANTING MIXTURE

SHALL BE HOMOGENOUS BLEND OF SOIL AND ADDITIVES IN THE FOLLOWING PROPORTIONS:
EXISTING SITE SOIL IF SUITABLE OR IMPORTED TOPSOIL 50%
COMPOST 30%
D/W SAND 20%
SOIL TESTING OF EXISTING SITE SOIL IS TO BE UNDERTAKEN TO ASSESS SUITABILITY OF USE AS PLANTING TOPSOIL AND COMPLIANCE WITH AUSTRALIAN STANDARDS.

MULCH APPLICATION

PLACE MULCH TO THE REQUIRED DEPTH, (REFER TO DRAWINGS) CLEAR OF PLANT STEMS, AND RAKE TO AN EVEN SURFACE FINISHING 25MM BELOW ADJOINING LEVELS. ENSURE MULCH IS WATERED IN AND TAMPED DOWN DURING INSTALLATION.

MULCH TYPE

PINE BARK: FROM MATURE TREES, GRADED IN SIZE FROM 15MM TO 30MM, FREE FROM WOOD SLIVERS, DARK BROWN IN COLOUR AND TEXTURE.

COMPOST

SHALL BE WELL ROTTED VEGETATIVE MATERIAL OR ANIMAL MANURE, OR OTHER APPROVED MATERIAL, FREE FROM HARMFUL CHEMICALS, GRASS AND WEED GROWTH AND WITH NEUTRAL PH. PROVIDE A CERTIFICATE OF PROOF OF PH UPON REQUEST.

PLANT MATERIAL

ALL PLANTS SUPPLIED ARE TO CONFORM WITH THOSE SPECIES LISTED IN THE PLANT SCHEDULE ON THE DRAWINGS. GENERALLY PLANTS SHALL BE VIGOROUS, WELL ESTABLISHED, HARDENED OFF, OF GOOD FORM CONSISTENT WITH SPECIES OR VARIETY, NOT SOFT OR FORCED, FREE FROM DISEASE OR INSECT PESTS WITH LARGE HEALTHY ROOT SYSTEMS AND NO EVIDENCE OF HAVING BEEN RESTRICTED OR DAMAGED. TREES SHALL HAVE A LEADING SHOOT. IMMEDIATELY REJECT DRIED OUT, DAMAGED OR UNHEALTHY PLANT MATERIAL BEFORE PLANTING. ALL STOCK IS TO BE CONTAINER GROWN FOR A MINIMUM OF SIX (6) MONTHS PRIOR TO DELIVERY TO SITE

FERTILISER MASS PLANTING AREAS:

FERTILISER SHALL BE 'NUTRICOTE' OR APPROVED EQUIVALENT IN GRANULE FORM INTENDED FOR SLOW RELEASE OF PLANT NUTRIENTS OVER A PERIOD OF APPROXIMATELY NINE MONTHS. THOROUGHLY MIX FERTILISER WITH PLANTING MIXTURE AT THE RECOMMENDED RATE, PRIOR TO INSTALLING PLANTS.

TURF

SHALL BE SIR WALTER BUFFALO, SHIRELAYS NO. 17 OR APPROVED EQUAL LAWN FOOD SHALL BE THOROUGHLY MIXED INTO THE TOPSOIL PRIOR TO LAYING TURF.

TREES IN GRASS AND SUPER ADVANCED TREES:

PELLETS SHALL BE IN THE FORM INTENDED TO UNIFORMLY RELEASE PLANT FOOD ELEMENTS FOR A PERIOD OF APPROXIMATELY NINE MONTHS EQUAL TO SHIRELAYS KOKOI PELLETS. ANALYSIS 6.3:1.82:3. KOKOI PELLETS SHALL BE PLACED AT THE TIME OF PLANTING TO THE BASE OF THE PLANT, 50MM MINIMUM FROM THE ROOT BALL AT A RATE OF TWO PELLETS PER 300MM OF TOP GROWTH TO A MAXIMUM OF 8 PELLETS PER TREE.

STAKING AND TYING

STAKES SHALL BE STRAIGHT HARDWOOD, FREE FROM KNOTS AND TWISTS, POINTED AT ONE END AND SIZED ACCORDING TO SIZE OF PLANTS TO BE STAKED.
A. 5-15 LITRE SIZE PLANT 1X(1200X25X25MM)
B. 35-75 LITRE SIZE PLANT 2X(1800X30X30MM)
C. 100- GREATER THAN 200LITRE 3X(1800X50X50MM)
TIES SHALL BE 50MM WIDE HESSIAN WEBBING OR APPROVED EQUIVALENT NAILED OR STAPLED TO STAKE. DRIVE STAKES A MINIMUM ONE THIRD OF THEIR LENGTH, AVOIDING DAMAGE TO THE ROOT SYSTEM, ON THE WINDWARD SIDE OF THE PLANT.

IRRIGATION SYSTEM

SUPPLY AN AUTOMATIC WATERING SYSTEM USING 'TORO IRRIGATION SYSTEM' OR SIMILAR APPROVED, WITH MICRO-JET SPRINKLER HEADS AND LOW DENSITY, RUBBER MODIFIED POLYPROPYLENE RETICULATION, TO INCLUDE FILTERS, BENDS JUNCTIONS, ENDS AND OTHER ANCILLARY EQUIPMENT. THE LANDSCAPER SHALL NOMINATE HIS SOURCE OF SUPPLY FOR THE WATERING SYSTEM AND OBTAIN APPROVAL FROM THE SUPERINTENDENT BEFORE PLACING ORDERS FOR EQUIPMENT OR SUPPLY.

A SCHEMATIC PLAN OF THE PROPOSED IRRIGATION SYSTEM IS TO BE PREPARED BY THE CONTRACTOR, SHOWING SOLENOIDS, PIPE DIAMETERS, AND ALL NOZZLE AND TRICKLE ATTACHMENT TYPES (INCLUDING SPRAY/HEAD ANGLE), FOR REVIEW BY THE SUPERINTENDENT PRIOR TO INSTALLATION

THE CONTRACTOR IS TO LIASE WITH THE HYDRAULIC ENGINEER AND COUNCIL AS NECESSARY, TO ENSURE THE THE IRRIGATION SYSTEM CONFORMS WITH ALL THE COUNCIL AND WATER BOARD CODES AND REQUIREMENTS.

PROVIDE AN AUTOMATIC CONTROLLER THAT PROVIDES FOR TWO WEEK SCHEDULING AND HOURLY MULTI-CYCLE OPERATION. THE CONTROLLER SHALL MANUAL OVERRIDE. PROGRAMMING SHALL BE UNDERTAKEN BY THE CONTRACTOR WHO SHALL ADVISE ON THE OPERATION OF THE SYSTEM.

PROVISION OF SECURE HOUSING FOR THE AUTOMATIC IRRIGATION CONTROLLER TO BE LOCATED IN ASSOCIATION WITH THE LANDSCAPE CONTRACTOR AND LOCATION CONFIRMED BY THE SUPERINTENDENT. WIRING TO CONNECT REMOTE SOLENOID LOCATIONS IS TO BE PROVIDED. THE CONTROLLER SHALL BE LOCATED IN A DRY PLACE, PROTECTED FROM THE WEATHER, AND ALL CABLE CONNECTIONS SHALL BE MADE WITH WATERPROOF CONNECTORS.

WATER SUPPLY POINTS TO BE SUPPLIED BY BUILDER.

IT SHALL BE THE CONTRACTOR'S RESPONSIBILITY TO ENSURE AND GUARANTEE SATISFACTORY OPERATION OF THE IRRIGATION SYSTEM.

AFTER THE SYSTEM HAS BEEN INSTALLED TO THE SATISFACTION OF THE SUPERINTENDENT, THE INSTALLATION SHALL BE TESTED UNDER KNOWN WORKING CONDITIONS. ACCEPTANCE OF THE INSTALLED PLANT AND EQUIPMENT SHALL BE SUBJECT TO THESE BEING SATISFACTORY.

TREATED PINE TIMBER EDGING

TIMBER EDGE: 100 X 25MM CCA TREATED RADIATA PINE TIMBER STAKES: 50 X 50 X 500MM CCA TREATED RADIATA PINE SHARPENED AT ONE END. INSTALL IN LOCATIONS SHOWN ON THE DRAWINGS FLUSH TO FINISHED SURFACE LEVELS.

TURF

TURF ALL LANDSCAPE AREAS AS SHOWN ON THE LANDSCAPE DRAWINGS. TURF IS TO HAVE AN EVEN THICKNESS OF NOT LESS THAN 25MM. OBTAIN TURF FROM AN APPROVED GROWER. FURNISH A WARRANTY FROM THE GROWER THAT THE TURF IS FREE FROM WEEDS AND OTHER FOREIGN MATTER. DELIVER TURF TO THE SITE WITHIN 24 HOURS OF BEING CUT, AND LAY IT WITHIN 24 HOURS OF BEING DELIVERED.

TO PREPARE GRADED AREAS TO RECEIVE TURF, EXCAVATE THE AREA AND CULTIVATE SO AS TO ALLOW FOR IMPORTING OF 100MM OF TURF UNDERLAY SOIL. REMOVE ALL STONES OVER 50MM Ø AND REMOVE ALL WEEDS AND FOREIGN MATTER. SPREAD SOIL MIX A.B.S TO A DEPTH OF 100MM AND GRADE TO APPROPRIATE LEVELS TO ACHIEVE GENERAL EVEN GRADES TO DRAINAGE OUTLETS INSTALLED BY OTHERS.

LAY THE TURF ALONG THE LAND CONTOURS WITH STAGGERED, CLOSE BUTTED JOINTS, SO THAT THE FINISHED TURF SURFACE IS FLUSH WITH ADJACENT FINISHED SURFACES OF PAVING AND THE LIKE. AS SOON AS PRACTICABLE AFTER LAYING, ROLL THE TURF WITH A ROLLER WEIGHING NOT MORE THAN 90KG PER METRE OF WIDTH FOR SANDY OR LIGHT SOILS.

WATER AS NECESSARY TO KEEP THE SOIL MOIST TO A DEPTH OF 100MM. PROTECT NEWLY TURFED AREAS AGAINST TRAFFIC UNTIL GRASS IS ESTABLISHED. FERTILISE TWO WEEKS AFTER LAYING FERTILISE A.B.S

'TOP DRESS' THE TURF WHEN IT IS ESTABLISHED TO A DEPTH OF 10MM WITH COARSE WASHED RIVER SAND. RUB THE DRESSING WELL INTO THE JOINTS AND CORRECT ANY UNEVENNESS IN THE TURF SURFACES.

LANDSCAPE MAINTENANCE PROGRAM

MAINTENANCE SHALL MEAN THE CARE AND MAINTENANCE OF THE LANDSCAPE WORKS BY ACCEPTED HORTICULTURAL PRACTICE AS RECTIFYING ANY DEFECTS THAT BECOME APPARENT IN THE LANDSCAPE WORKS UNDER NORMAL USE. THIS SHALL INCLUDE, BUT SHALL NOT BE LIMITED TO, WATERING, MOWING, FERTILISING, RESEEDING, RETURNING, WEEDING, PEST AND DISEASE CONTROL, STAKING AND TYING, REPLANTING, CULTIVATION, PRUNING, AERATING, RENOVATING, TOP DRESSING, MAINTAINING THE SITE IN A NEAT AND TIDY CONDITION AS FOLLOWS:-

GENERAL

THE LANDSCAPE CONTRACTOR SHALL MAINTAIN THE LANDSCAPE WORKS FOR THE TERM OF THE MAINTENANCE (OR PLANT ESTABLISHMENT) PERIOD TO THE SATISFACTION OF THE COUNCIL. THE LANDSCAPE CONTRACTOR SHALL ATTEND TO THE SITE ON A WEEKLY BASIS. THE MAINTENANCE PERIOD SHALL COMMENCE AT PRACTICAL COMPLETION AND CONTINUE FOR A PERIOD OF TWENTY SIX (26) WEEKS.

WATERING

GRASS, TREES AND GARDEN AREAS SHALL BE WATERED REGULARLY SO AS TO ENSURE CONTINUOUS HEALTHY GROWTH.

RUBBISH REMOVAL

DURING THE TERM OF THE MAINTENANCE PERIOD THE LANDSCAPE CONTRACTOR SHALL REMOVE RUBBISH THAT MAY OCCUR AND REOCCUR THROUGHOUT THE MAINTENANCE PERIOD. THIS WORK SHALL BE CARRIED OUT REGULARLY SO THAT AT WEEKLY INTERVALS THE AREA MAY BE OBSERVED IN A COMPLETELY CLEAN AND TIDY CONDITION.

REPLACEMENTS

THE LANDSCAPE CONTRACTOR SHALL REPLACE ALL PLANTS THAT ARE MISSING, UNHEALTHY OR DEAD AT THE LANDSCAPE CONTRACTOR'S COST. REPLACEMENTS SHALL BE OF THE SAME SIZE, QUALITY AND SPECIES AS THE PLANT THAT HAS FAILED UNLESS OTHERWISE DIRECTED BY THE LANDSCAPE ARCHITECT. REPLACEMENTS SHALL BE MADE ON A CONTINUING BASIS NOT EXCEEDING TWO (2) WEEKS AFTER THE PLANT HAS DIED OR IS SEEN TO BE MISSING.

STAKES AND TIES

THE LANDSCAPE CONTRACTOR SHALL REPLACE OR ADJUST PLANT STAKES, AND TREE GUARDS AS NECESSARY OR AS DIRECTED BY THE LANDSCAPE ARCHITECT. REMOVE STAKES AND TIES AT THE END OF THE MAINTENANCE PERIOD IF SO DIRECTED.

PRUNING

TREES AND SHRUBS SHALL BE PRUNED AS DIRECTED BY THE LANDSCAPE ARCHITECT. PRUNING WILL BE DIRECTED AT THE MAINTENANCE OF THE DENSE FOLIAGE OR MISCELLANEOUS PRUNING AND BENEFICIAL TO THE CONDITION OF THE PLANTS. ANY DAMAGED GROWTH SHALL BE PRUNED. ALL PRUNED MATERIAL SHALL BE REMOVED FROM THE SITE.

MULCHED SURFACES

ALL MULCHED SURFACES SHALL BE MAINTAINED IN A CLEAN AND TIDY CONDITION AND BE REINSTATED IF NECESSARY TO ENSURE THAT A DEPTH OF 75MM IS MAINTAINED. ENSURE MULCH IS KEPT CLEAR OF PLANT STEMS AT ALL TIMES.

PEST AND DISEASED CONTROL

THE LANDSCAPE CONTRACTOR SHALL SPRAY AGAINST INSECT AND FUNGUS INFESTATION WITH ALL SPRAYING TO BE CARRIED OUT IN ACCORDANCE WITH THE MANUFACTURER'S DIRECTIONS. REPORT ALL INSTANCES OF PESTS AND DISEASES (IMMEDIATELY THAT THEY ARE DETECTED) TO THE LANDSCAPE ARCHITECT.

GRASS AND TURF AREAS

THE LANDSCAPE CONTRACTOR SHALL MAINTAIN ALL GRASS AND TURF AREAS BY WATERING, WEEDING, DRESSING, ROLLING, MOWING, TRIMMING OR OTHER OPERATIONS AS NECESSARY. SEED AND TURF SPECIES SHALL BE THE SAME AS THE ORIGINAL SPECIFIED MIXTURE. GRASS AND TURF AREAS SHALL BE SPRAYED WITH APPROVED SELECTIVE HERBICIDE AGAINST BROAD LEAVED WEEDS AS REQUIRED BY THE LANDSCAPE ARCHITECT AND IN ACCORDANCE WITH THE MANUFACTURER'S DIRECTIONS. GRASS AND TURF AREAS SHALL BE FERTILISED ONCE A YEAR IN AUTUMN WITH 'DYNAMIC LIFTER' FOR LAWNS AT A RATE OF 20KG PER 100M2. FERTILISER SHALL BE WATERED IN IMMEDIATELY AFTER APPLICATION. IRREGULARITIES IN THE GRASS AND TURF SHALL BE WATERED IN IMMEDIATELY AFTER APPLICATION. GRASS AND TURF AREAS SHALL BE KEPT MOWN TO MAINTAIN A HEALTHY AND VIGOROUS SWARD. MOWING HEIGHT: 35-50MM.

WEED ERADICATION

ERADICATE WEEDS BY ENVIRONMENTALLY ACCEPTABLE METHODS USING A NON-RESIDUAL GLYPHOSATE HERBICIDE (EG. 'ROUNDUP') IN ANY OF ITS REGISTERED FORMULAE, AT THE RECOMMENDED MAXIMUM RATE. REGULARLY REMOVE BY HAND, WEED GROWTH THAT MAY OCCUR OR RECUR THROUGHOUT GRASSED, PLANTED AND MULCHED AREAS. REMOVE WEED GROWTH FROM AN AREA 750MM DIAMETER AROUND THE BASE OF TREES IN GRASSED AREAS. CONTINUE ERADICATION THROUGHOUT THE COURSE OF THE WORKS AND DURING THE MAINTENANCE PERIOD.

SOIL SUBSIDENCE

ANY SOIL SUBSIDENCE OR EROSION WHICH MAY OCCUR AFTER THE SOIL FILLING AND PREPARATION OPERATIONS SHALL BE MADE GOOD BY THE LANDSCAPE CONTRACTOR AT NO COST TO THE CLIENT.